

Faculty of Law  
University of Nis  
Trg Vojske Jugoslavije 11  
YU - 18000 Niš  
PO Box 122  
SERBIA AND MONTENEGRO

14<sup>th</sup> January 2010

To whom it may concern

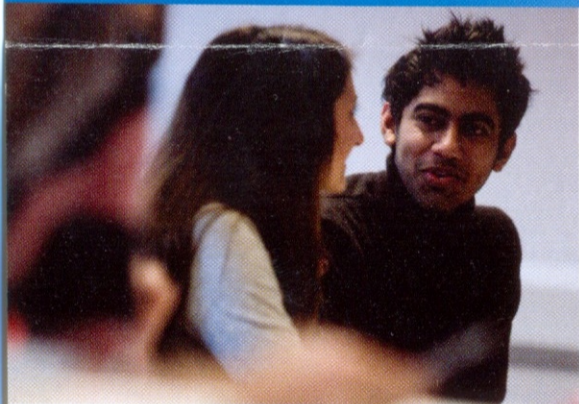
Please find enclosed a poster with details of PhD studentships available at Kent Law School at the University of Kent.

I would be grateful if you could kindly display the poster to bring it to the attention of your students. Should you wish to send us any such information pertinent to your Law School we would be happy to do the same.

With grateful thanks



Daniel Lee  
Communication and Admissions Officer  
Kent Law School



# Kent Law School Research Studentships

**Kent Law School is pleased to invite applications for its research studentships commencing in September 2010. The studentships will support full-time students undertaking a PhD in Law.**

Kent Law School is a leading centre of critical legal research, ranked as the 6th best law school in the 2008 UK Research Assessment Exercise. We are seeking candidates whose research will contribute significantly to existing debates in their chosen field of study, in particular socio-legal studies and critical legal studies, and who will actively participate in our lively and pluralistic postgraduate research community.

For more information about the studentships and studying at one of the leading critical law schools in the UK, please contact Maria Drakopoulou, Director of Postgraduate Research, at [m.drakopoulou@kent.ac.uk](mailto:m.drakopoulou@kent.ac.uk).

The closing date for studentship applications is Friday 19th February.

Further details...

[www.kent.ac.uk/law/studentship.html](http://www.kent.ac.uk/law/studentship.html)

**Kent**  
Law School